



Swagat®

ENDURA MAXX

TWO-IN-ONE EMULSION PAINT SUITABLE FOR BOTH
INTERIOR & EXTERIOR CEMENTITIOUS SURFACES.



VIBRANT SHADES



Garden Fragrance



Signal Red



Cinnamon



Plum Perfect



Plum Berry



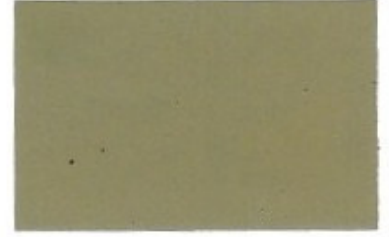
Sapphire Blue



Aqua Regia



Sound Of Nature



Bambi Beige



Daffodil



Sunrise



Tempting Teal



Brownie



Wind Tick



Frankly Scarlet



Purple Tryst



Thunder Cloud



Mullberry Bush

NORMAL SHADES



Sassy Yellow



Desert Sun



Lemon Delight



Desert Dreams



Balsa



Cold Candy



Stonewave



Chinese Orange



Petite Peach



Ming Red



Apple Blossom



Beautiful Berry



Tickled Pink



Jaipur Dreams



Evening Sky



Ceramic Pink



Nil Blue



Scandinavian Sky



Watercolour Blue



Grace



Key Largo

* Also Available in Black & White

NORMAL SHADES



Trinidad



Cucumber Salad



Misty Spring



Mountain Lion



Green Terrace



Moghul Green



Silver Crescent



Pisces



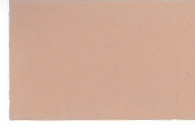
Lama



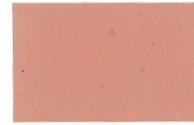
Antique Sterling



Seashell



Cozy Corner



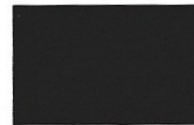
Rustic Charm



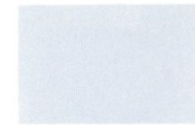
Iron Ore



Ancient Pottery



Renaissance



Grey Tabby



Terracotta



Revel



Wedge Wood



Mehendi

* Shades are shown for Indication purpose only



PRODUCT DESCRIPTION

Swagat® ENDURA MAXX is a next generation emulsion paint formulated to ensure its suitability for both interior and exterior walls. Its formulation uses additives & pigments/extenders based on nano-technology to provide excellent opacity, washability, fungal/algal resistance, and superior weathering properties. It is available in more than 1000 shades (refer to the Swagat Colour Palette).

DIRECTIONS FOR USE

- Surface must be free from all loose particles, dust, oil, and grease, etc.
- Sand the surface properly using Emery Paper prior to the application of the primer coat.
- Apply one or two coats of Swagat® Cement Primer (Silver, Gold or Super Gold Series) (Water-Thinnable), before application of Swagat® ENDURA MAXX.
- Maximum dilution of Swagat® ENDURA MAXX with water should not exceed 25 % by volume.
- For best results apply 2-3 coats of Swagat® ENDURA MAXX, with a minimum interval of 6-8 hrs between each coat. For vibrant and deep shades, it is advised to apply 3 coats and restrict the dilution to 15% by volume.
- To enhance the life and the luster of the paint. It is recommended to seal it with one or two coats of Swagat® Shine Guard 2012.



MONALISA COLOUR & CHEMICAL CO.

(An ISO 9001 : 2015 Certified Company)

Head Office

9, Pran Krishna Mukherjee Road
Kolkata 7000 002.
West Bengal , INDIA
Ph : 033 2555 6985

Factory

Alampur More, Mumbai Road
N.H. 6. PO. New Kolorah
Howrah 711 302
Ph +91 8232027900