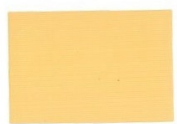




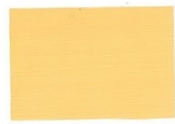
MONALISA[®]

Hi-Gloss Premium PU Synthetic
Enamel

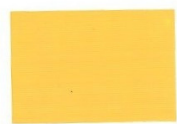




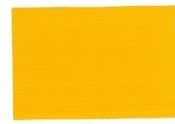
Raw Silk



Royal Ivory



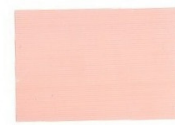
Pale Cream



Lemon Yellow



Golden Yellow



Petal



Summer Rose



Deep Orange



Signal Red



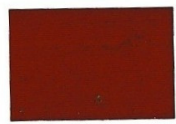
P.O. Red



Cherry Red



Golden Brown



Leaf Brown



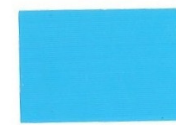
Truck Brown



Light Grey



Smoke Grey



Sky Blue



Oxford Blue



Brown



Regency Grey



Dk. Adm Grey



Satin Blue



Phirozi



Wild Lilac



MONALISA[®]

Hi-Gloss Premium PU Synthetic Enamel



Pista



Aquamarine



Mint Green



Jade Green



Bus Green



Also available in Non-Metallic - Brilliant White, Snow White & Black.

Also available in Metallic - Brilliant Gold, Sparkle Silver
SHADES ARE FOR INDICATION ONLY

MONALISA® High Gloss Premium PU Synthetic Enamel is formulated on high quality alkyd resins suitably modified to give excellent durability, high gloss and a good hold out with a fast drying time. It is suitable for wood, metal and masonry surfaces.

Direction For Use

- ➔ The substrate must be sound, clean, dry, and free from dust, oil, grease etc.
- ➔ Lightly sand the substrate with emery paper before application.
- ➔ Depending on the substrate on which the application is to be done, ensure that it is primed with a suitable primer before application of **Monalisa®** Hi-Gloss Premium PU Synthetic Enamel.

★ **Wooden substrate : Prime with Monalisa® Wood Primer**

★ **Metal Substrate : Prime with Monalisa® AC Red Oxide Metal Primer**

★ **Masonry substrate : Prime with Monalisa® Cement Primer**

- ➔ **Monalisa®** Hi-gloss Premium PU Synthetic Enamel can be thinned using good quality Mineral Turpentine Oil (MTO), maximum 5-8% by volume.
- ➔ Two to three coats of painting are recommended for best finish. For dark shades, three coats is advisable for complete opacity.
- ➔ Ensure that each coat is fully dry before application of the next coat. Depending on the temperature and relative humidity, it is advisable to allow each coat to dry overnight before re-coating.


✦ **Excellent Gloss and Gloss retention properties.**


✦ **Excellent Opacity and Covering Power.**


✦ **Excellent Colour Durability.**

✦ **Optimized drying time providing a smooth and tough finish.**

SAFETY MEASURES :

 Avoid eye and skin contact. Painters should ensure that they wear suitable clothing, gloves & protective glasses whilst working.

 • In case of contact, rinse with water and seek medical attention immediately.

 • Keep out of reach of children.



WAX (INDIA)

15, J.N. Mukherjee Lane,
Kolkata - 700 002

CUSTOMER HELPLINE

 **+91 9831088901**

e-mail: waxindia20@gmail.com



FLAMMABLE LIQUID

Monalisa® products contain no added lead, mercury, chromium, cadmium etc.

sunshinemarketing2019@gmail.com